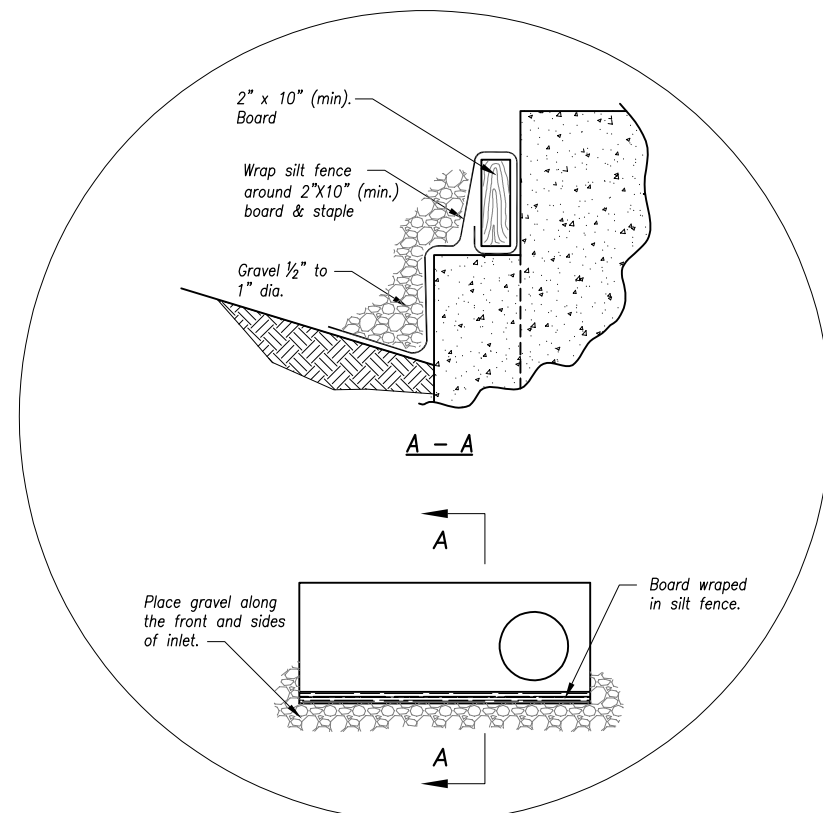


On Grade Curb Inlet Protection



Detail A

CONDITION A  
Open Box and Prior to Pouring Curb and Inlet Throat

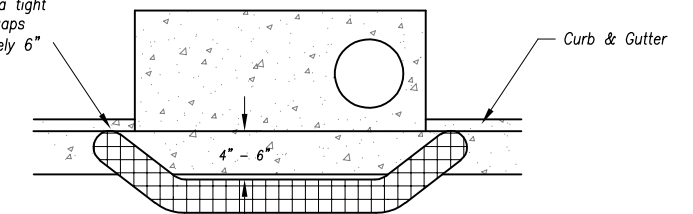
Notes:

1. Overland Park Municipal Code (OPMC) and Overland Park Design and Construction Standards Manual (OPDCSM) are incorporated, except as otherwise noted.
2. Immediately following inlet construction and prior to construction of curb and inlet throat, protect inlet opening by installing 2" X 10" (min.) board wrapped in silt fence. Structures shall have excavated storage area on all four sides to allow settling of sediment (Condition A).
3. When inlet is completed and curb poured, filter socks or approved equal should be used (Condition B). Straw wattles are not approved for curb inlet use.
4. Contractor to field verify ponding water shall not create a traffic hazard.

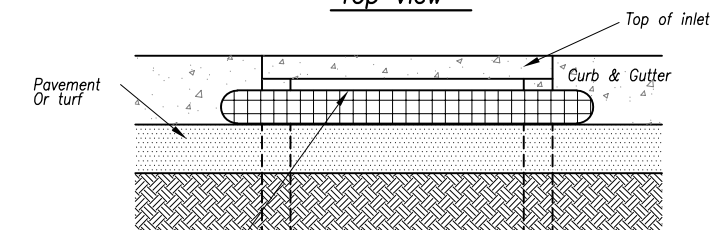
Maintenance:

Remove deposited sediment from excavated storage areas when available storage has been reduced by 20%.  
Remove deposited sediment from filter socks or similar when any accumulation of sediment is visible.  
Repair or replace as necessary to maintain function and integrity of installation.

Filter sock is to have a tight curb contact with no gaps and extend approximately 6" beyond inlet opening.



Top View



Front View

Height of filter sock should not be above the top of the inlet.

Sump Inlet Sediment Filter

CONDITION B  
After Pouring Curb and Inlet Throat

Year 2019 Edition

REVISIONS:	
Dec. 2011	Maintenance Statement;
RELATED ORDINANCES:	
OPMC Title 15	

**OVERLAND PARK**  
KANSAS

ABOVE AND BEYOND. BY DESIGN.

DEPARTMENT OF PUBLIC WORKS  
STANDARD DETAILS

TEMPORARY SEDIMENT BARRIER -  
CURB INLET

DATE: 11/01/05 SHEET: 37