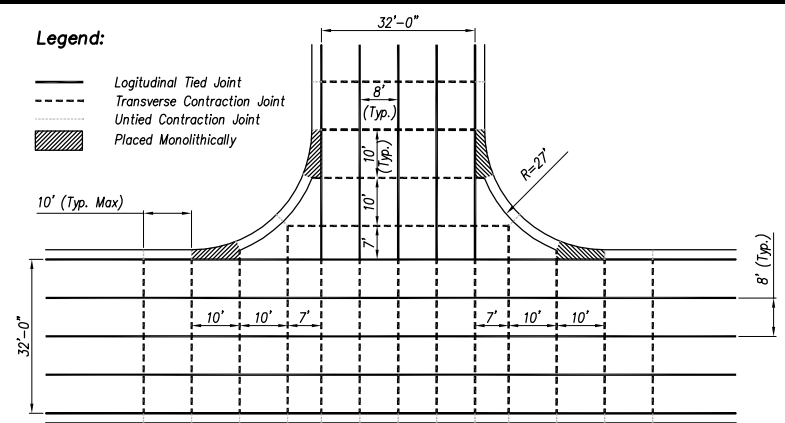


Legend:

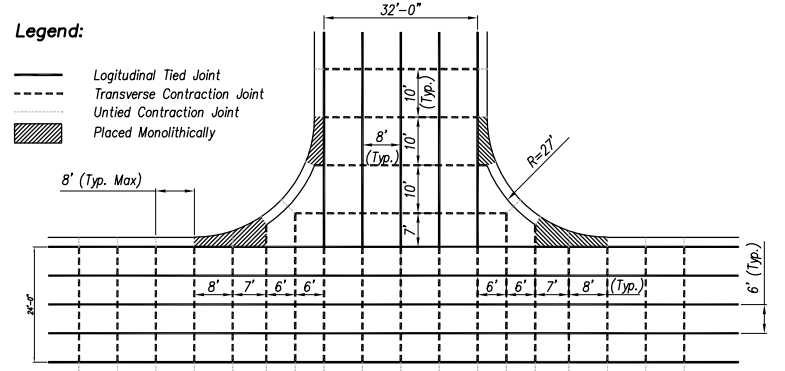
- Logitudinal Tied Joint
- - - Transverse Contraction Joint
- - - Untied Contraction Joint
- ▨ Placed Monolithically



Typical Collector / Collector Intersection

Legend:

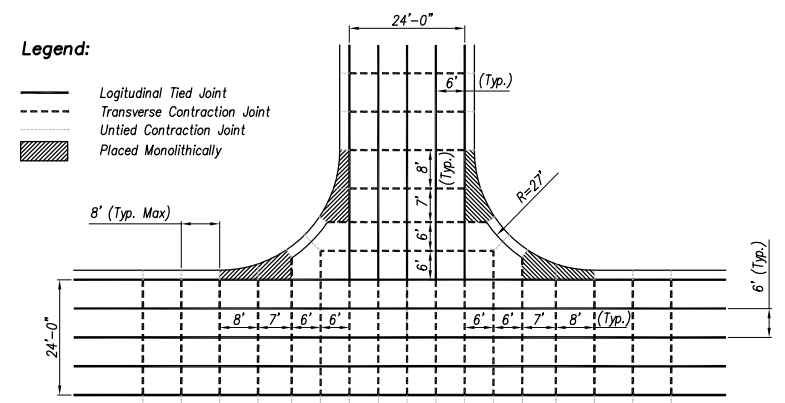
- Logitudinal Tied Joint
- - - Transverse Contraction Joint
- - - Untied Contraction Joint
- ▨ Placed Monolithically



Typical Collector / Residential Intersection

Legend:

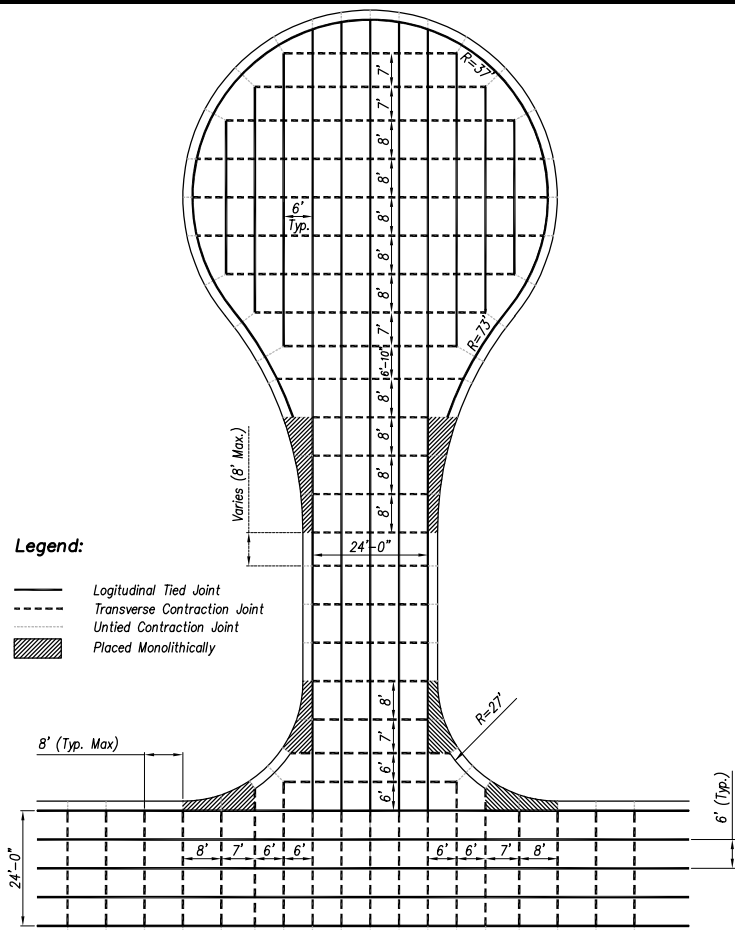
- Logitudinal Tied Joint
- - - Transverse Contraction Joint
- - - Untied Contraction Joint
- ▨ Placed Monolithically



Typical Residential / Residential Intersection

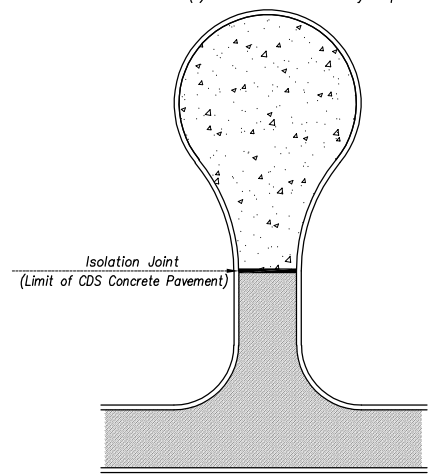
Legend:

- Logitudinal Tied Joint
- - - Transverse Contraction Joint
- - - Untied Contraction Joint
- ▨ Placed Monolithically



Typical Residential CDS (*)

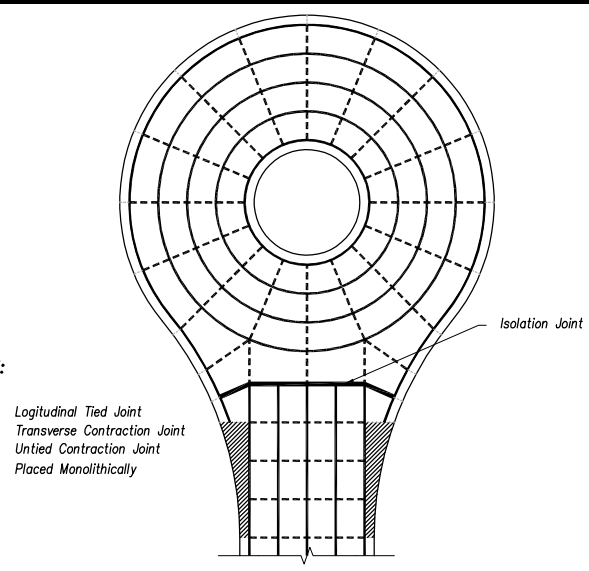
(*) - Curb and Gutter may be placed monolithically



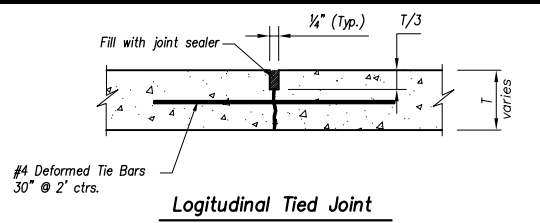
Concrete CDS at Asphalt Street

Legend:

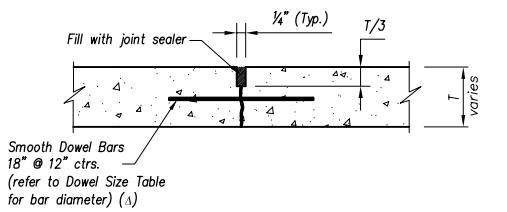
- Logitudinal Tied Joint
- - - Transverse Contraction Joint
- - - Untied Contraction Joint
- ▨ Placed Monolithically



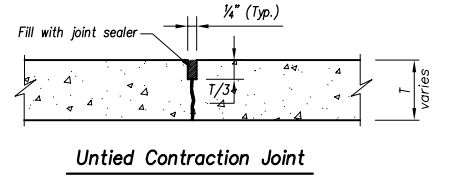
Residential CDS with Island



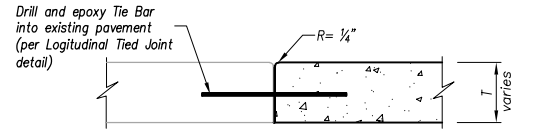
Logitudinal Tied Joint



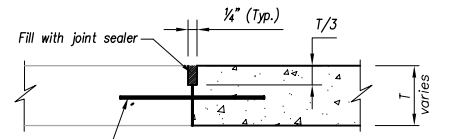
Transverse Contraction Joint



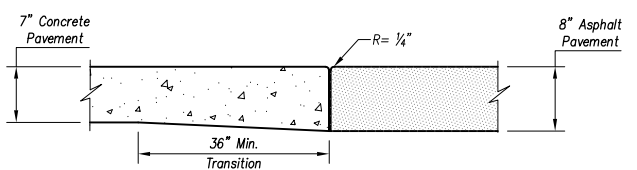
Untied Contraction Joint



Logitudinal Construction Joint



Transverse Construction Joint



Isolation Joint at Residential Asphalt Street

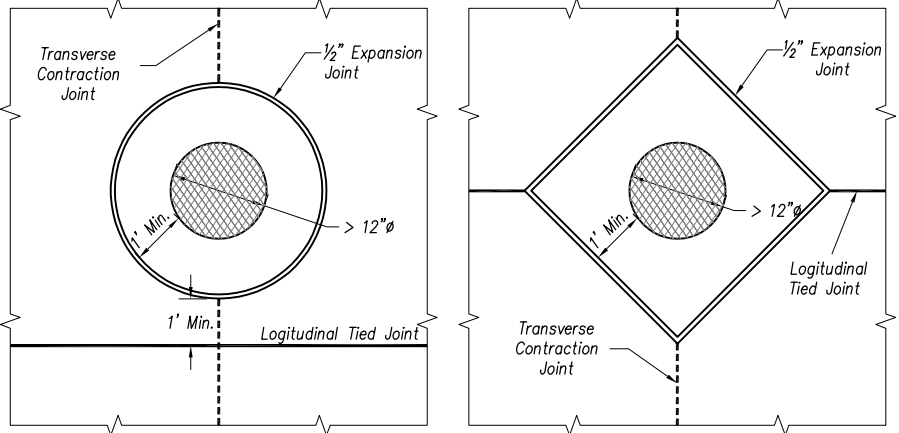
Joint Details

(Δ) - no Dowel Bars when $T \leq 7'$

Note: Tie bars shall not be less than 12" from end of Dowel Bars.

Dowel Size

T (in.)	Diameter
$T \leq 7$	No Dowels Required
$7 < T < 9$	1"
$T \geq 9$	1 1/4"



Boxout for Casting in Pavement

The Contractor shall submit a final jointing plan to the City two weeks prior to beginning of pavement construction. No concrete pavement shall be constructed without prior approval of the jointing plan by the City Engineer.

DRAWING NAME: K:\Details_Specs\Detail_Drawings\details_english\revision_19\concrete joint layout.dwg
 WEB SITE ADDRESS: <http://www.opkansas.org/Doing-Business/Construction-Details>

REVISIONS:	
RELATED ORDINANCES:	
OPMC Title 13	

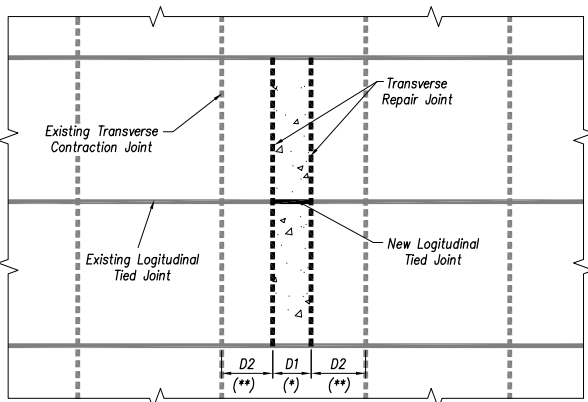
Year 2019 Edition

OVERLAND PARK
KANSAS

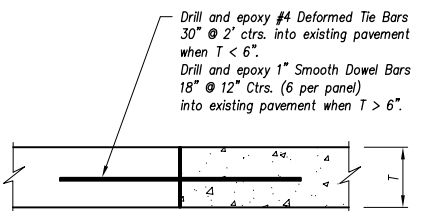
ABOVE AND BEYOND. BY DESIGN.

DEPARTMENT OF PUBLIC WORKS
STANDARD DETAILS

CONCRETE JOINT LAYOUT



Concrete Street Repair



Transverse Repair Joint

(*) - When street repair (D1) is greater than 50% of the slab, replace the entire slab.
 (**) - When the distance between the repair joint and the existing joint (D2) is less than 3', replace panel to the existing joint. (See Transverse Construction Joint Detail). When D2 is more than 3' - see Transverse Repair Joint Detail.