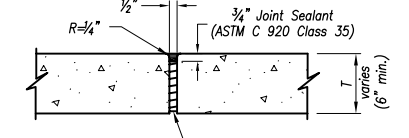
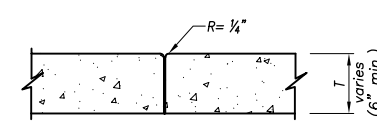
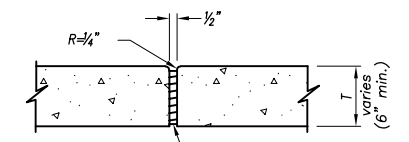
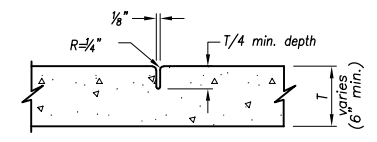
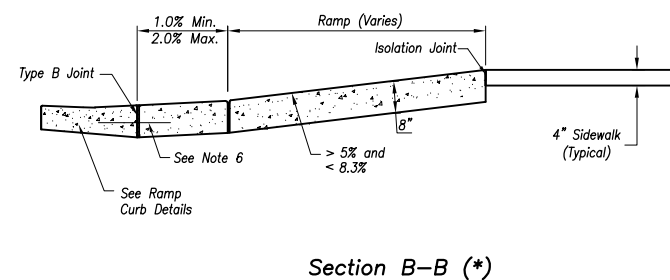
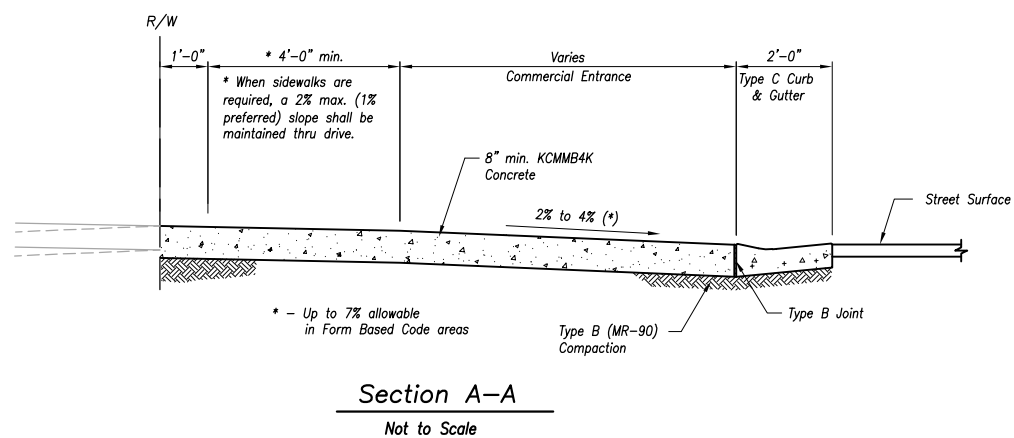


COMMERCIAL ENTRANCE WITH MEDIAN



Section A-A
Not to Scale

Section B-B (*)
* - See Note 4 for application of Detectable Warning Surface
Not to Scale

Type A (Contraction)

Type B (Isolation)

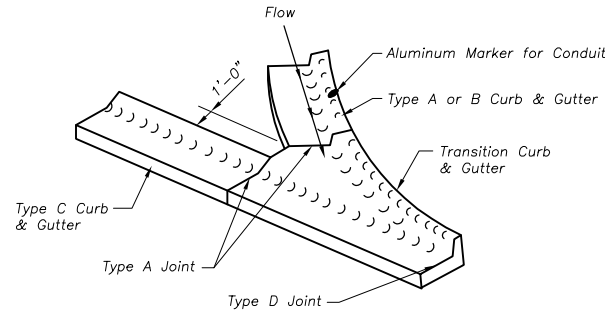
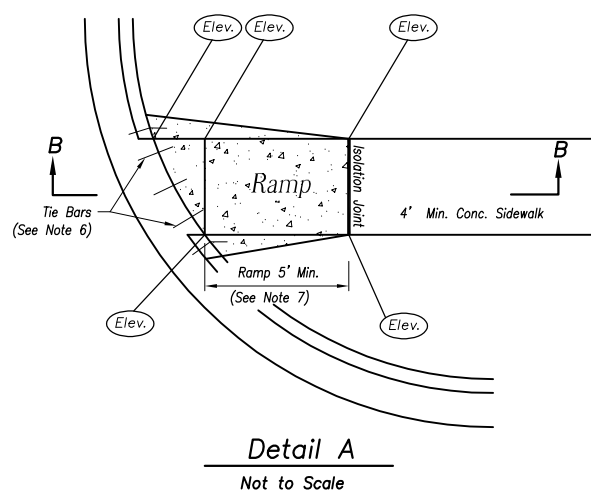
Type C (Construction)

Type D (Expansion)

Commercial Drive Notes:

- Overland Park Municipal Code (OPMC) and Overland Park Design and Construction Standards Manual (OPDCSM) are incorporated, except as otherwise noted.
- KCMMB4K Concrete shall be used throughout.
- Concrete pavement shall be jointed with Type A joints. No jointed slab shall exceed 12' x 12'.
- Detectable warning surfaces are not required at non-signalized entrances.
- ADA compliance will be measured at points labeled (Elev.).
- Install 18" tie bars #4 epoxy coated @ 18" o.c. and through wings as shown.
- Sidewalk Ramp shall be lengthened to provide ADA compliant slope, but need not exceed 15'.
- ADA maximum ramp slope = 1"/Ft. ADA maximum cross slope = 2%.
- Top of curb elevations shall be shown at quarter points and curb returns.
- Any additional steel reinforcement shall be approved by the City Engineer.
- See Curb Replacement Detail for additional requirements.

JOINT DETAILS
Not to Scale



Detail A
Not to Scale

Detail B
Not To Scale

COMMERCIAL ENTRANCE DETAIL

REVISIONS:	
Jan. 2005	ADA Compliance;
Jan. 2009	Joint Locations; Miscellaneous;
Jan. 2017	Updated ADA Compliance;
RELATED ORDINANCES:	
OPMC Title 13	

Year 2019 Edition

OVERLAND PARK
KANSAS
ABOVE AND BEYOND. BY DESIGN.

DEPARTMENT OF PUBLIC WORKS
STANDARD DETAILS

COMMERCIAL ENTRANCE DETAIL