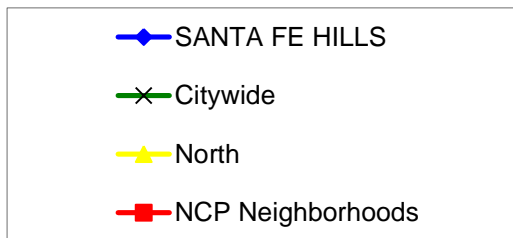
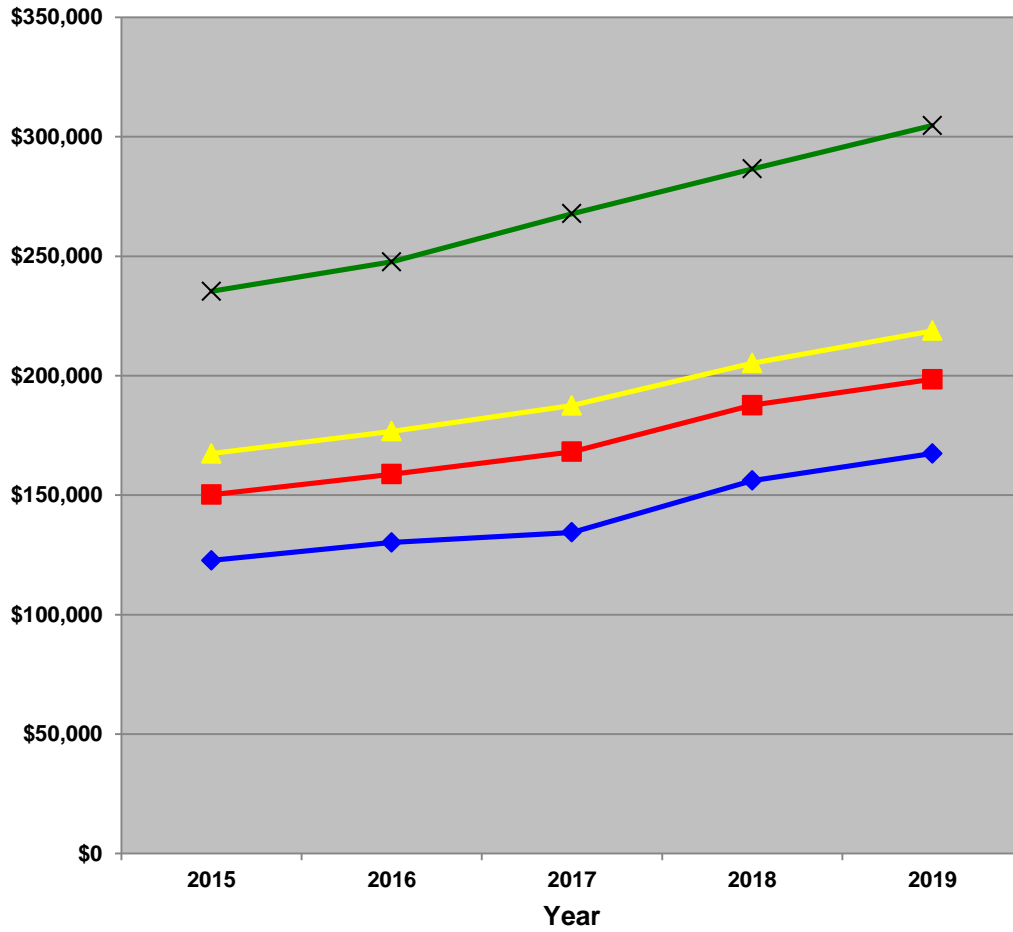
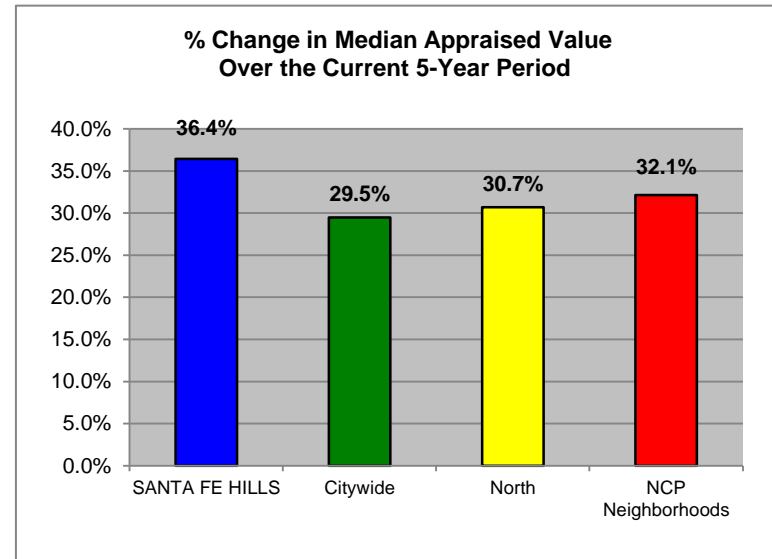


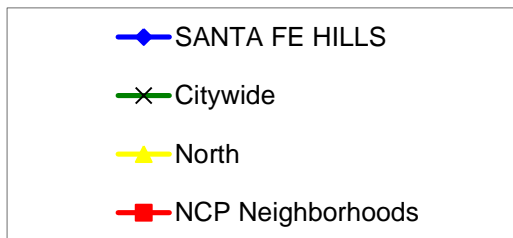
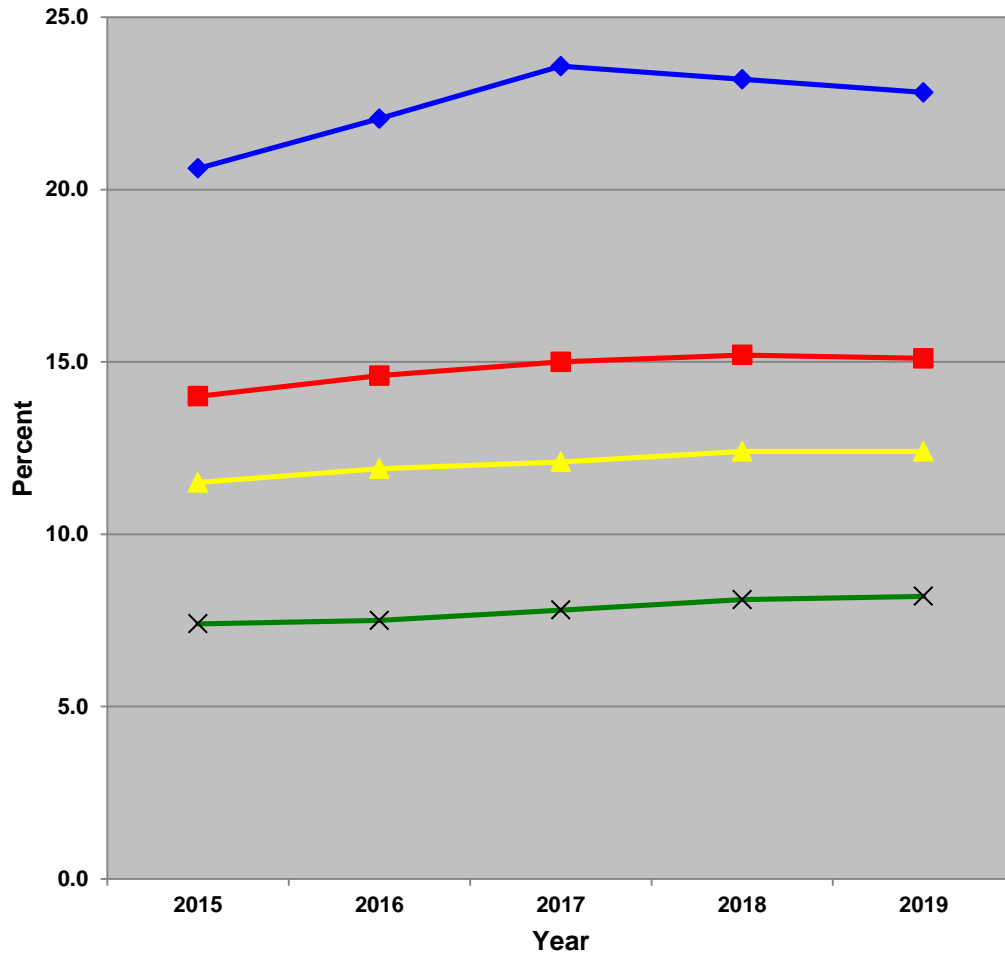
Median Appraised Value for all Single-Family Homes



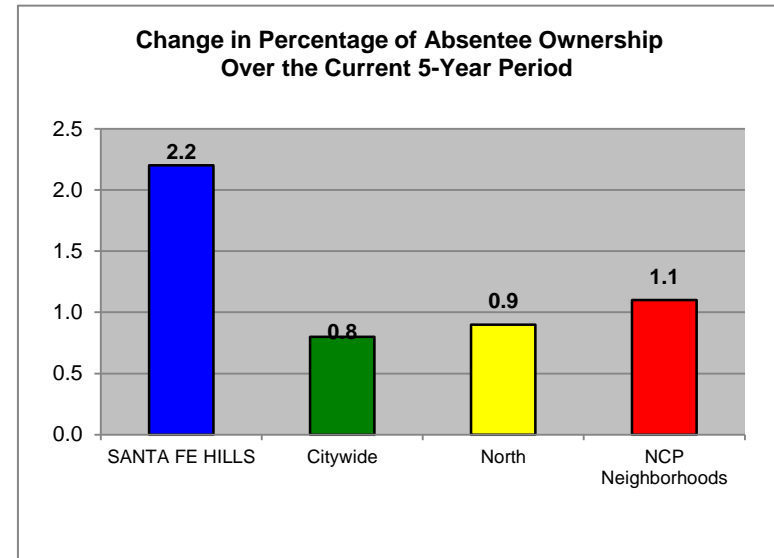
SANTA FE HILLS COMMUNITY



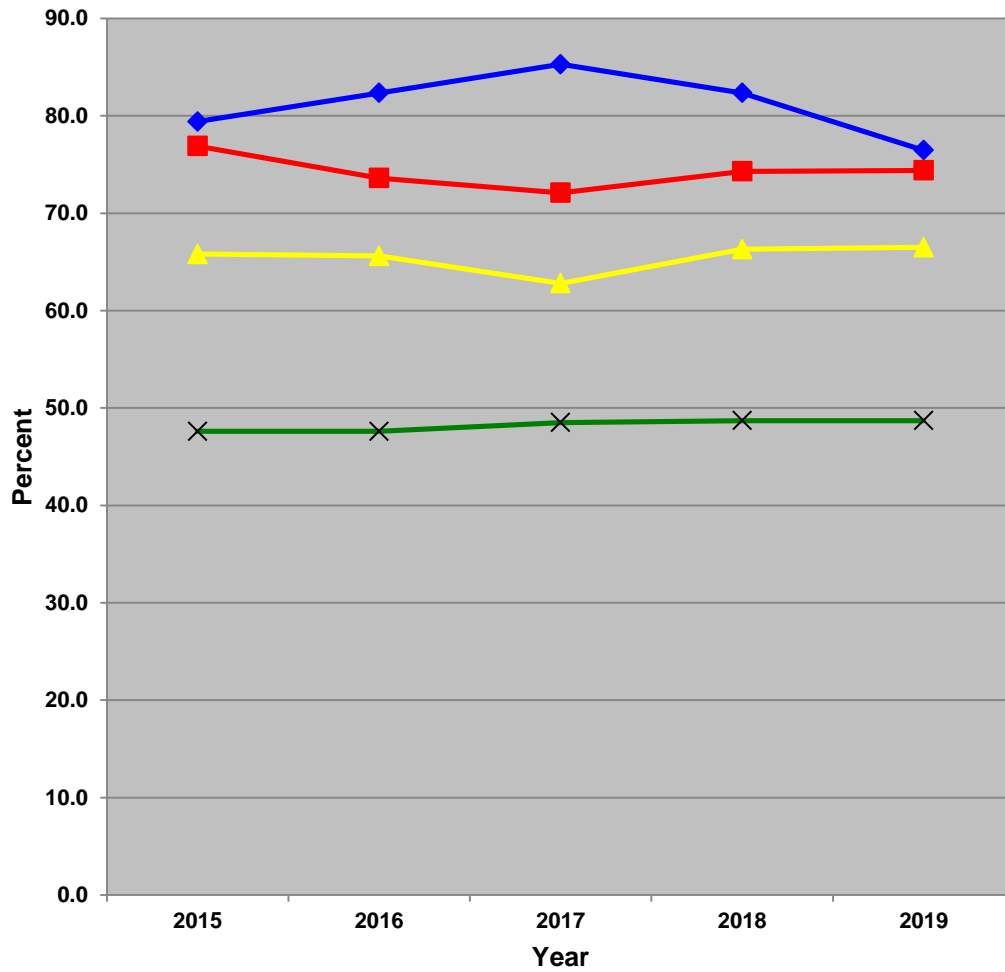
Percentage of Single-Family Homes with Absentee Ownership



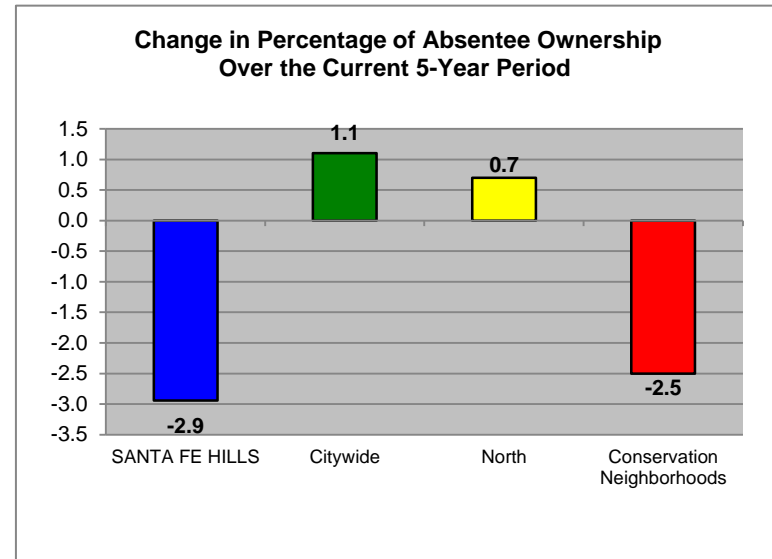
SANTA FE HILLS COMMUNITY



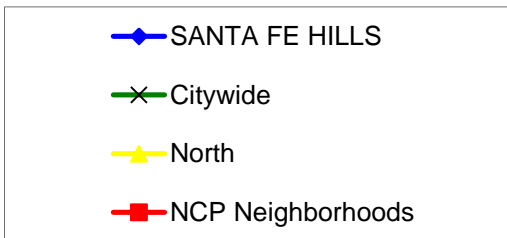
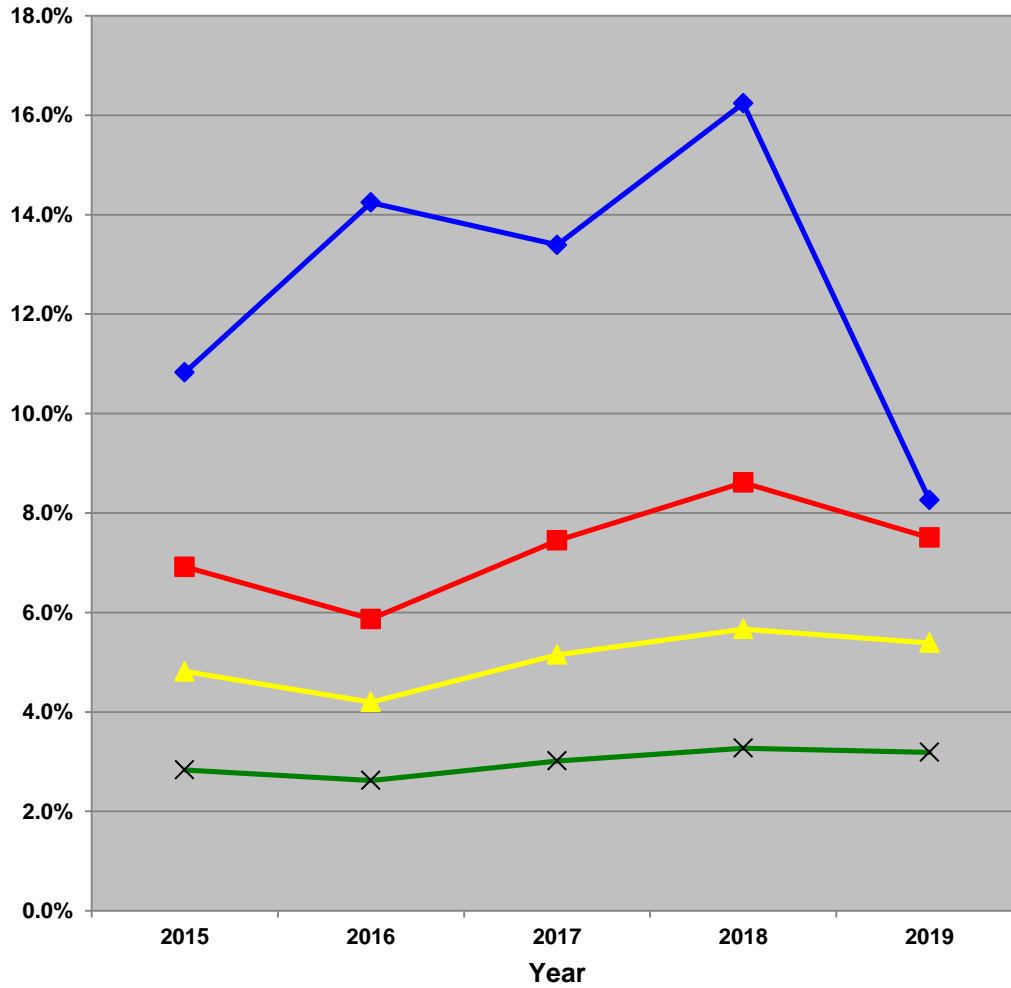
Percentage of Duplexes with Absentee Ownership



SANTA FE HILLS COMMUNITY

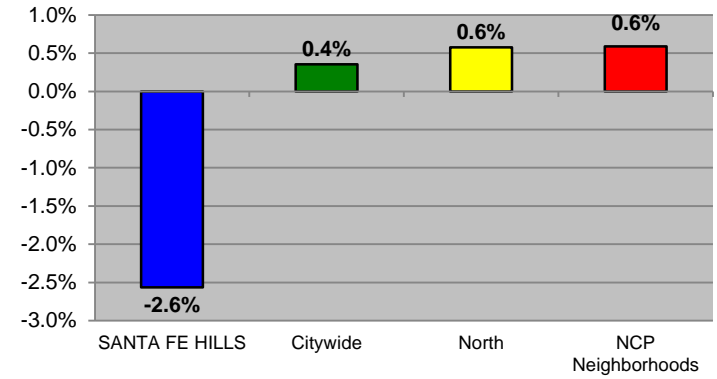


Percentage of Residential Units with Property Maintenance Violations

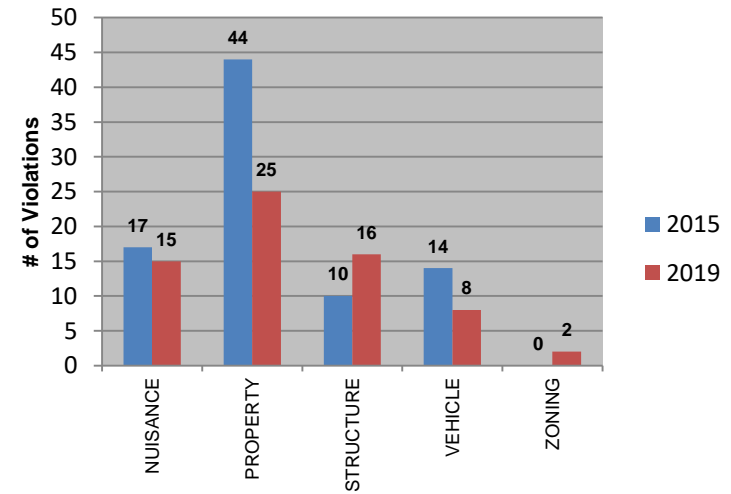


SANTA FE HILLS COMMUNITY

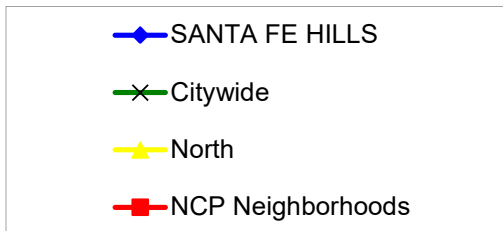
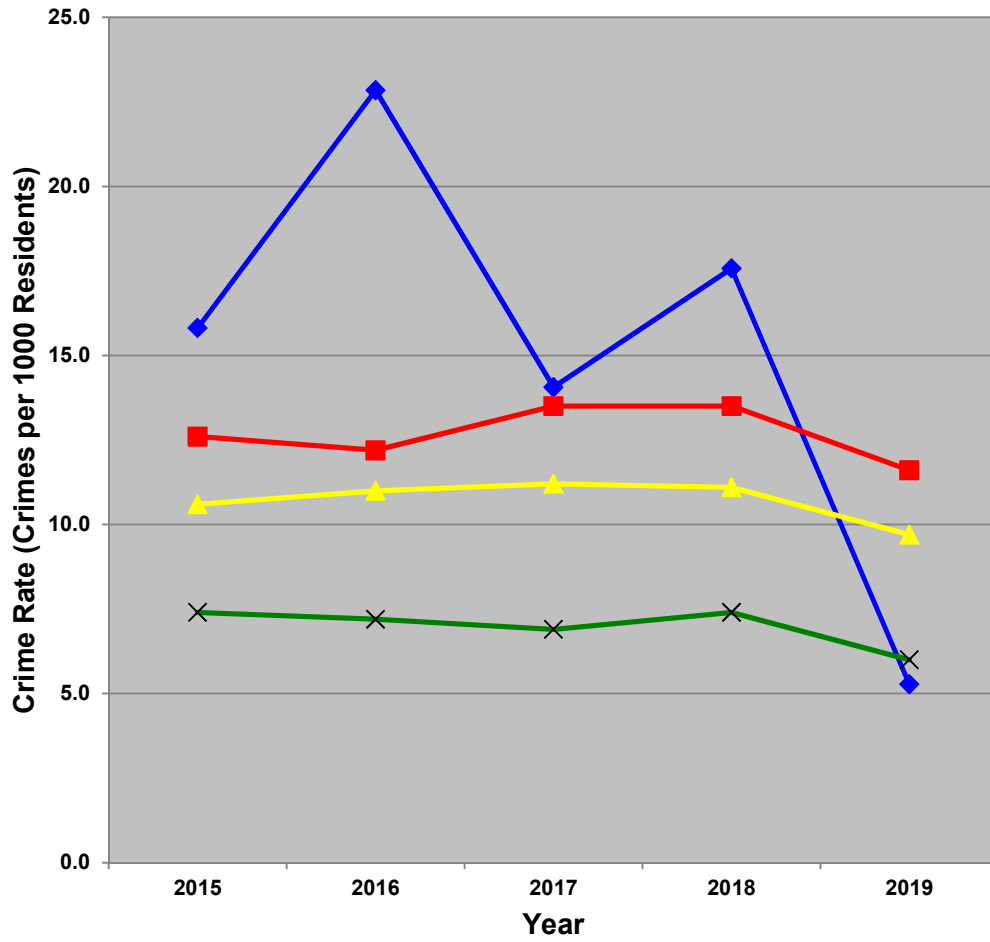
Change in Percentage Over the Current 5-Year Period



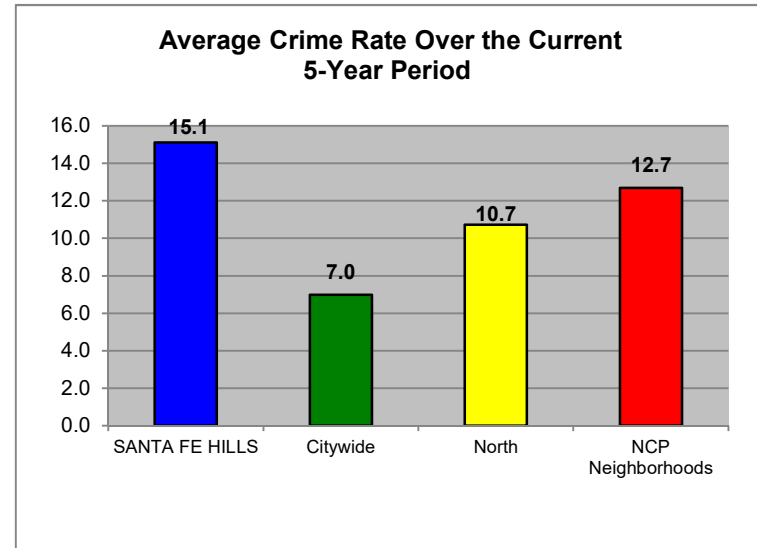
of Violations per Category



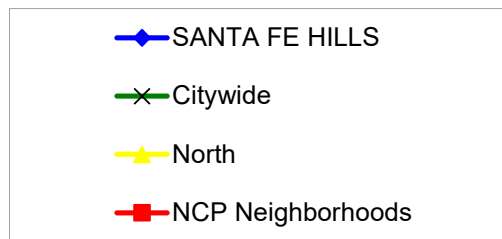
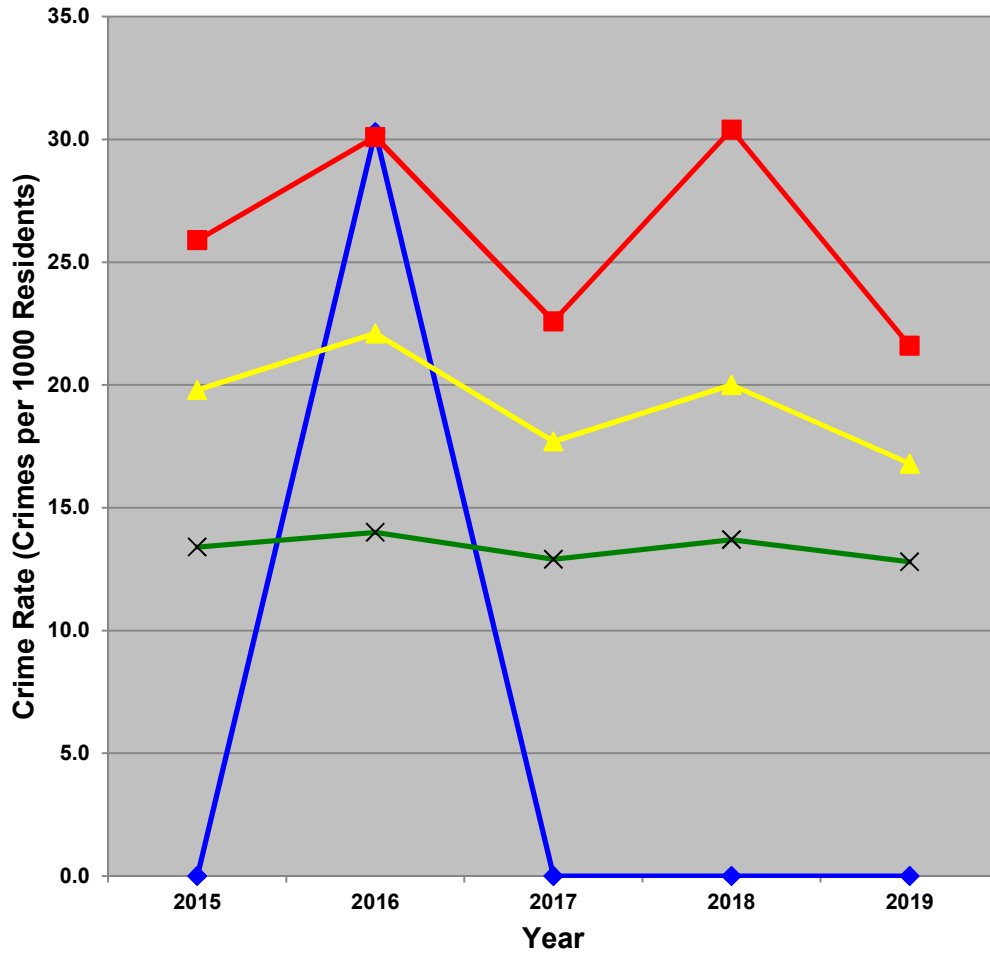
Single-Family & Duplex Major Crime Rate



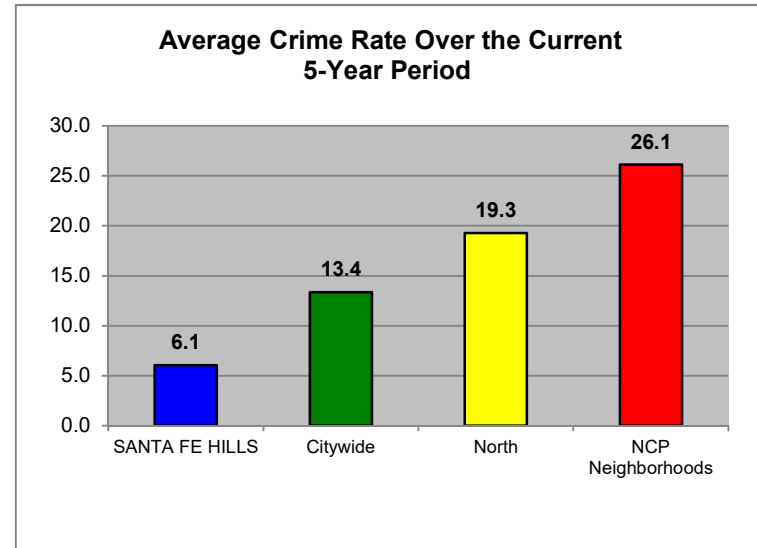
SANTA FE HILLS COMMUNITY



Multifamily Major Crime Rate



SANTA FE HILLS COMMUNITY

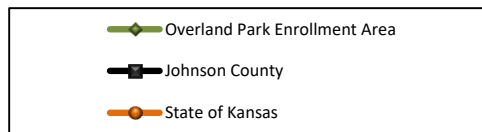
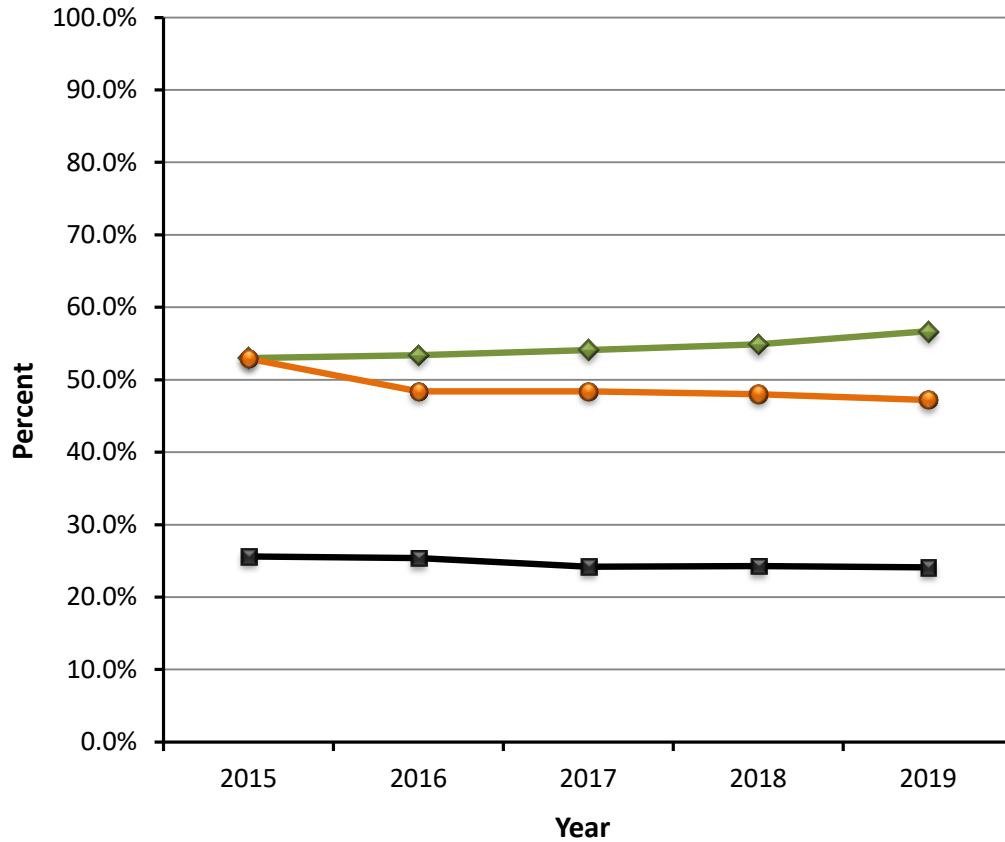


Overland Park Elementary Enrollment Area

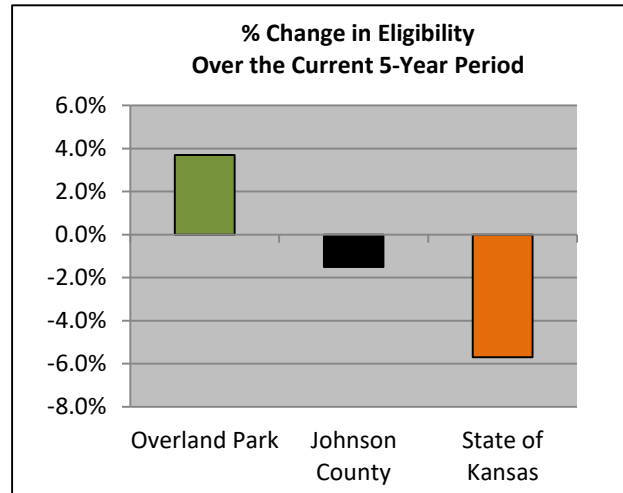
(Associated NCP Neighborhoods)

- *Glenwood Estates
- *Historic Overland Park
- *Santa Fe Hills
- *Strang Line
- *South Lake
- *Tomahawk
- *Young's Park

Percent of Elementary School Enrollment Eligible for School Lunch Program



% Change in Eligibility Over the Current 5-Year Period



NOTE: The National School Lunch Program, a long-standing federal program, provides free and reduced cost lunches to children from low and moderate income households.